

BOX-IT

THE NEW STANDARD

General Fasteners has been providing our customers with innovative packaging solutions for over 40 years. We are now proud to expand that offering to include custom corrugated boxes.

Let GF help you tap into our industry experience to create the perfect box. Creative options and design choices are what custom boxes are all about.

Call us today and let us help you with your custom solution.



310-4343

www.gfpackaging.ca

gf
Packaging

310-GFGF

www.gfpackaging.ca

CREATIVE PROCESS AND CHOICES

Creative options and design choices are what custom boxes are all about. Let GF help you tap into our industry experience to create the perfect box.

Graphic Design

We can help create an all new concept for your; or adapt an existing design

Structural Design

We will work with our manufacturers' experience and creativity to create the most effective box design to meet your needs.



Ways to Add Colour

1) Direct Flexo Printing

The most common method of printing on corrugated board. Flexo produces excellent results in one to four colours.

2) Litho-Laminating

Preprinted paper sheets are glued to the corrugated board before conversion into a box. Since the sheets are printed by high-quality litho, photographic detail and brilliance are possible. This is an excellent process for retail packaging and point of purchase displays.

3) Screen Printing

Similar in result to litho-laminating, screen printing is especially suited to smaller quantities and very large size items.

4) Coloured Board

A wide range of solid colours are available through a flood coating process.

Wax for Strength and Protection

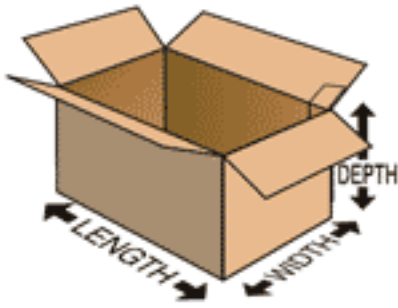
Curtain Coating:

Corrugated sheets are coated with a continuous film of wax, on one or both sides

Cascade Waxing:

Boxes are completely saturated with molten wax, providing the highest degree of water resistance. Stacking strength is also improved.

Determining Box Dimensions



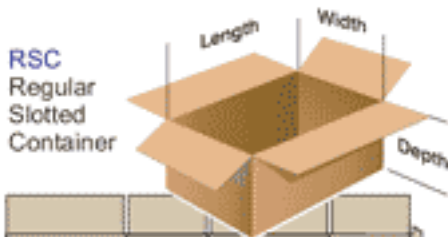
Without exception, the size of a corrugated cardboard box is always expressed by three dimensions:

Length, then Width, then Depth. (**L** x **W** x **D**)

These measurements refer to the inside dimensions of the box.

- The **Length** is the larger dimension of the box's opening.
- The **Width** is the smaller dimension.
- The **Depth** is perpendicular to the opening.

Typical Slotted Containers



RSC
Regular
Slotted
Container

Regular Slotted Container

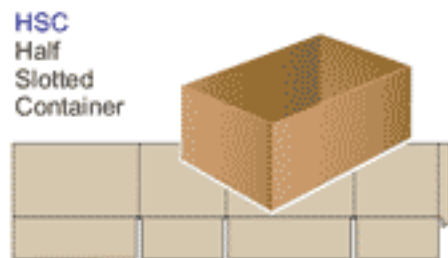
The Regular Slotted Carton (RSC) is the most common and economical box style to manufacture. The length panel flaps of the RSC meet at the center of the box on both the top and bottom.



FOL / POL
Full or
Partial
Overlap

Full Over Lap Top & Bottom

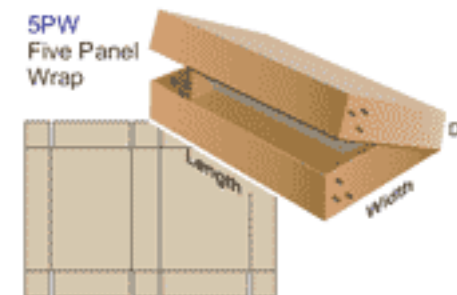
The Full Flap Slotted Carton's (FFSC) has outer flaps that fully overlap. This offers extra strength and support and is particularly suitable to cartons that have a narrow width.



HSC
Half
Slotted
Container

Half Slotted Container Regular Bottom

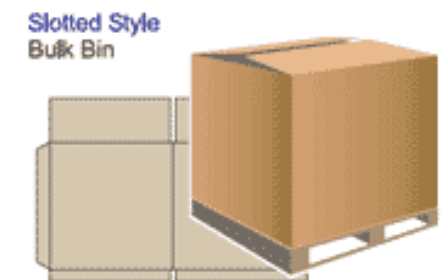
The Half-Slotted Carton (HSC) is much like the RSC but with flaps only on one end, leaving an open top on the other end.



5PW
Five Panel
Wrap

5 Panel Wrap

The Five Panel Folder (5PF), when assembled, has multi-layered corrugated ends that make it an excellent container for the shipment of long, flat items. It is supplied flat for you to wrap around your product and sealed at the ends by your means.

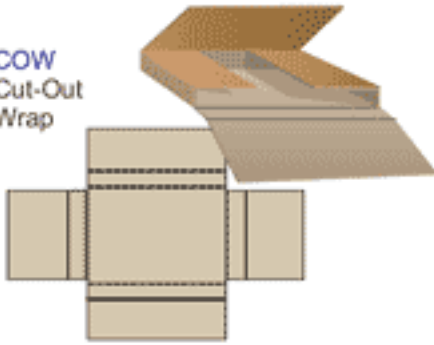


**Slotted Style
Bulk Bin**

Bulk Bins

Bulk bins can be made as simple pallet covers, or multi-wall shippers for half-ton loads.

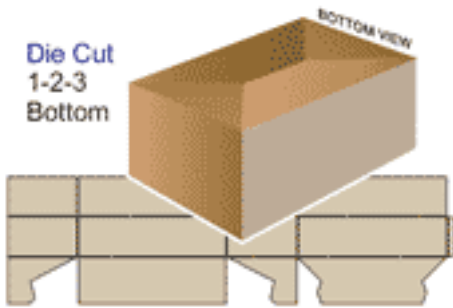
COW
Cut-Out
Wrap



Cut-Out Wrap

Ideal for smaller flat items or as an inner pack. Variations of this style can provide extra protection on ends and corners.

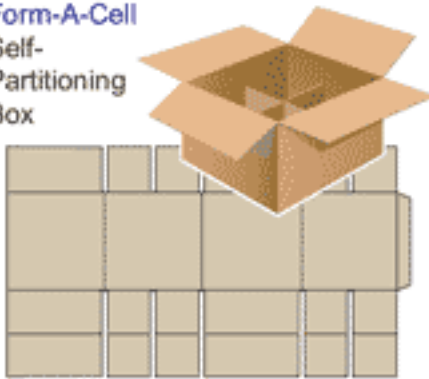
Die Cut
1-2-3
Bottom



1-2-3 Bottom

The 1-2-3 bottom is easy to close and quite strong. It can be used with a wide variety of sizes.

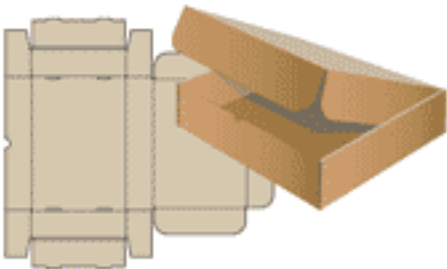
Form-A-Cell
Self-
Partitioning
Box



Self Partitioning Box

This slotted box saves extra costs associated of separate partitions.

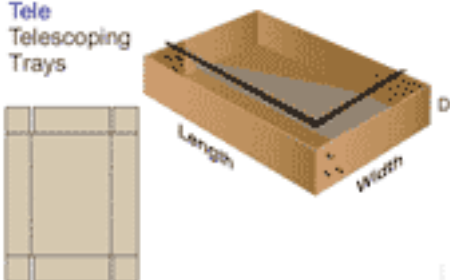
Die Cut -
Roll End Tray
with cover



Roll End Tray With Cover

Designed to have locking side flaps with a top that tucks into the front and side panels for closer.

Tele
Telescoping
Trays



Telescoping Lid & Body

Telescoping boxes consist of a separate top and bottom that fit over each other or a separate body.